





**HYDRONIC PRODUCTS**

# Water Chillers & Heat Pumps

- New mini-chiller - 2 new sizes to be launched in 2008
- High COP (Coefficient of Performance)
- R410A refrigerant that does not harm the ozone layer
- Incorporated hydronic module that includes circulation pump with expansion tank
- Installation of a buffer tank is not necessary
- Anti-vibration supports included



## NEW Air-to-water heat pumps

Model number		SCP-AR061EH5		SCP-AR071EH5		SCP-AR091EH5		SCP-AR091EH8		SCP-AR121EH5		SCP-AR121EH8		SCP-AR161EH8		SCP-AR181EH8	
Performance		Cooling	Heating	Cooling	Heating	Cooling	Heating	Cooling	Heating	Cooling	Heating	Cooling	Heating	Cooling	Heating	Cooling	Heating
Capacity	kW	5.1	6.1	5.9	7.3	7.1	9.0	7.2	9.1	8.5	10.65	9.0	12.7	11.4	15.2	15.7	19.6
Absorbed power	kW	2.12	2.18	2.61	2.56	3.14	3.16	3.09	3.11	3.31	3.48	3.73	3.94	4.98	4.82	6.88	6.32
Absorbed current	A			12.2	12.8	11.4	15.0	6.1	6.1	16.1	16.7	7.2	7.5	10.2	9.9	15.2	14.6
E.E.R./COP	W/W	2.41	2.80	2.26	2.85	2.26	2.85	2.33	2.92	2.57	3.06	2.41	3.22	2.29	3.15	2.28	3.1
ESEER	W/W	-	-	na	-	2.53	-	na	-	2.82	-	2.47	-	2.51	-	2.66	-
Water flow	l/sec			0.28	0.34	0.34	0.44	0.34	0.43	0.41	0.5	0.42	0.6	0.55	0.75	0.75	0.94
Available pump head	kPa	50	-	64	57	59	47	59	47	82	66	80	53	84	68	78	59
Main power supply	V/Ph/Hz	230/1+N/50				400/3+N/50				230/1+N/50				400/3+N/50			
Expansion tank volume	l	2		2		2		2		2		2		2		2	
Hydraulic connection diameter	inch	3/4" Male						1" Male									
Sound levels																	
Sound power level	dB(A)	65						67						73			
Sound pressure level	dB(A)	37						39						45			
System water content																	
Minimum water content	l	30		40		40		50		50		60		60			
Dimensions & weights																	
HxWxD	mm	735x1190x340						1235x1190x340						1235x1190x340			
Weight net	kg	82		90		98		128		133		138					

## NEW Water chillers

Model number		SCP-AR051E5	SCP-AR081E5	SCP-AR081E8	SCP-AR111E8	SCP-AR151E8	SCP-AR171E8	
Performance		Cooling	Cooling	Cooling	Cooling	Cooling	Cooling	
Capacity	kW	5.2	8.0	8.0	11.0	13.7	16.3	
Absorbed power	kW		3.63	3.56	4.42	5.27	6.27	
Absorbed current	A	-	15.2	7.2	10.5	11.2	14.9	
E.E.R./COP	W/W	-	2.23	2.28	2.49	2.6	2.60	
ESEER	W/W	-	2.44	2.50	2.76	2.90	2.86	
Water flow	l/sec	-	0.39	0.39	0.53	0.65	0.8	
Available pump head	kPa	-		42	55	68	75	
Main power supply	V/Ph/Hz	230/1+N/50			400/3+N/50			
Expansion tank volume	l	-		2		2		
Hydraulic connection diameter	inch	-		3/4" Male		1" Male		
Sound levels								
Sound power level	dB(A)	-		65		67		
Sound pressure level	dB(A)	-		37		39		
System water content								
Minimum water content	l	-		30	40	50	60	
Dimensions & weights								
HxWxD	mm	-	735 x 1190 x 340		1235 x 1190 x 340		1235 x 1190 x 340	
Weight net	kg		87		110		122	

ESEER: European Seasonal Energy Efficient Ratio published by Eurovent

Specifications subject to change without notice

na: data not available at the time of publication

Nominal conditions	Sound pressure level
Outdoor air temperature 35°C	Unit installed outdoor (free field)
Inlet water temperature 12°C	Measuring distance 10m
Outlet water temp 7°C	Outdoor air temperature 35°C

- High COP
- R407C refrigerant that does not harm the ozone layer
- Incorporated hydronic module that includes circulation pump with expansion tank
- Installation of a buffer tank is not necessary
- Anti-vibration supports included
- 150 litre buffer tank available as an accessory



## Air-to-water heat pumps

Model number		SCP-AR241EH8		SCP-AR271EH8		SCP-AR351EH8		SCP-AR401EH8	
Performance		Cooling	Heating	Cooling	Heating	Cooling	Heating	Cooling	Heating
Capacity	kW	20.8	24.0	25.8	27.3	30.3	35.5	33.5	38.4
Absorbed power	kW	8.85	9.0	9.77	10.4	13.55	13.55	14.55	14.75
Absorbed current	A	18.6	19.9	20.0	20.9	27.3	25.0	29.3	28.7
E.E.R./COP	W/W	2.35	2.67	2.66	2.63	2.24	2.62	2.30	2.60
ESEER	W/W	2.78	-	2.49	-	2.45	-	2.72	-
Water flow	l/sec	0.97	1.17	1.25	1.30	1.45	1.65	1.68	2.0
Available pump head	kPa	215	185	160	145	200	140	165	95
Main power supply	V/Ph/Hz	400/3+N/50							
Hydraulic connection diameter	inch	1 1/4" Male							
Sound levels									
Sound power level	dB(A)	79		78		80		82	
Sound pressure level	dB(A)	51		50		52		54	
System water content									
Minimum water content	l	80		90		120		130	
Dimensions & weights									
HxWxD	mm	1175x975x1050		1175x975x1050		1175x975x1050		1425x975x1050	
Weight net	kg	303		305		327		363	

## Water chillers

Model number		SCP-AR201E8		SCP-AR251E8		SCP-AR301E8		SCP-AR401E8	
Performance		Cooling		Cooling		Cooling		Cooling	
Capacity	kW	20.7		23.8		31.0		39.0	
Absorbed power	kW	8.3		10.4		13.4		14.8	
Absorbed current	A	18.0		20.7		24.7		28.3	
E.E.R./COP	W/W	2.49		2.29		2.31		2.64	
ESEER	W/W	2.97		2.73		2.62		2.81	
Water flow	l/sec	0.99		1.16		1.48		1.87	
Available pump head	kPa	210		170		200		135	
Main power supply	V/Ph/Hz	400/3+N/50							
Hydraulic connection diameter	inch	1 1/4" Male							
Sound levels									
Sound power level	dB(A)	79		78		80		82	
Sound pressure level	dB(A)	51		50		52		54	
System water content									
Minimum water content	l	70		70		95		120	
Dimensions & weights									
HxWxD	mm	1175x975x1050		1175x975x1050		1175x975x1050		1425x975x1050	
Weight net	kg	292		295		317		353	

ESEER: European Seasonal Energy Efficiency Ratio published by Eurovent  
 Specifications subject to change without notice  
 na: data not available at the time of publication

Nominal conditions	Sound pressure level
Outdoor air temperature 35°C	Unit installed outdoor (free field)
Inlet water temperature 12°C	Measuring distance 10m
Outlet water temp 7°C	Outdoor air temperature 35°C

# Water Chillers & Heat Pumps continued

- High COP
- R407C refrigerant that does not harm the ozone layer
- Incorporated hydronic module that includes circulation pump with expansion tank
- 300 litre buffer tank is available as an accessory
- Low noise level



## Air-to-water heat pumps

Model number		SCP-AR502EH8		SCP-AR602EH8		SCP-AR702EH8		SCP-AR802EH8	
Performance		Cooling	Heating	Cooling	Heating	Cooling	Heating	Cooling	Heating
Capacity	kW	40.6	49.0	52.6	54.0	60.6	69.3	65.0	76.0
Absorbed power	kW	17.7	17.8	21.2	19.0	27.1	27.0	29.0	30.5
Absorbed current	A	35.0	37.2	41.1	39.2	53.5	48.8	58.0	58.2
E.E.R/COP	W/W	2.29	2.75	2.48	2.84	2.24	2.57	2.24	2.49
ESEER	W/W	2.76	-	2.34	-	2.45	-	2.66	-
Water flow	l/sec	1.94	2.34	2.51	2.58	2.90	3.31	3.06	3.58
Available pump head	kPa	260	215	200	180	210	150	200	120
Main power supply	V/Ph/Hz	400/3+N/50							
Hydraulic connection diameter	inch	1"1/2 Male							
Sound levels									
Sound power level	dB(A)	78		76		80		85	
Sound pressure level	dB(A)	50		48		52		57	
System water content									
Minimum water content	l	130		150		200		200	
Dimensions & weights									
HxWxD	mm	1175x1955x1050		1175x1955x1050		1175x1955x1050		1425x1955x1050	
Weight net	kg	589		593		627		699	

## Water chillers

Model number		SCP-AR502E8		SCP-AR602E8		SCP-AR702E8		SCP-AR802E8	
Performance		Cooling		Cooling		Cooling		Cooling	
Capacity	kW	47.6		62.0		67.0		78.0	
Absorbed power	kW	20.6		26.4		28.8		29.4	
Absorbed current	A	38.7		47.7		54.0		55.5	
E.E.R/COP	W/W	2.31		2.35		2.33		2.65	
ESEER	W/W	2.74		2.65		2.56		2.94	
Water flow	l/sec	2.28		2.96		3.2		3.73	
Available pump head	kPa	220		160		180		90	
Main power supply	V/Ph/Hz	400/3+N/50							
Hydraulic connection diameter	inch	1"1/4 Male							
Sound levels									
Sound power level	dB(A)	78		82				87	
Sound pressure level	dB(A)	50		54				59	
System water content									
Minimum water content	l	120		160		170		200	
Dimensions & weights									
HxWxD	mm	1175x1955x1050		1175x1955x1050		1175x1955x1050		1425x1955x1050	
Weight net	kg	573		607		629		679	

ESEER: European Seasonal Energy Efficient Ratio published by Eurovent

Specifications subject to change without notice

na: data not available at the time of publication

Nominal conditions	Sound pressure level
Outdoor air temperature 35°C	Unit installed outdoor (free field)
Inlet water temperature 12°C	Measuring distance 10m
Outlet water temp 7°C	Outdoor air temperature 35°C

# Controls



## Remote control

The functions and display are exactly the same as those on built-in controller. The controller is designed to be installed inside sheltered rooms.

The link can be extended up to 100 metres using a twisted pair shielded cable.

- 70250055 for 051-401 models
- 70250057 for 502-802 models



## RS485 ModBus Interface

- 70250056

For connection of the electronic control to a BMS system with ModBus standard.

# Accessories

## Buffer tank

To be used when water content of the system is below the minimum quantity as in the specification table.

- 70600118 capacity of 35lt for 051-181 models
- 70600110 capacity of 150lt with 400W anti-freeze electric heater for 201-401 models
- 70600120 capacity of 300lt with 800W anti-freeze electric heater for 502-802 models

## Set of two water hoses

- 70600054 length 1m Ø 3/4" for 051-091 models
- 70600055 length 1m Ø 1" for 111-181 models
- 70600027 length 1m Ø 1" 1/4 for 201-401 models
- 70600034 length 1.5m Ø 1" 1/2 for 502-802 models

## Start-up kit

This kit is used to lower the start-up current of the single-phase compressors.

- 70550004 for 051E5, 061EH5, 081E5, 081EH5, 091EH5, 121EH5 models

## HP and LP gauges

These elements, mounted on the vertical members of the unit's front face, display the high and low pressure values for each refrigeration circuit.

- 70970006 x1pc for 201-351 models
- 70970007 x1pc for 401 model
- 70970006 x2pcs for 502-702 models
- 70970007 x2pcs for 802 model

## Set of anti-vibration pads

To be located under girders.

- Included, 2pcs thickness 12.5mm, for 051-181 models
- 70600035, 4pcs thickness 25mm, for 201-802 models

## Condensate tank heating cord

Length 1.5m, to be placed in the bottom of the condensate tank, close to the fin tube exchanger.

- 70200055 for 061-181EH heat pump models

# Water Terminals

- Wide model range for 2-pipe and 4-pipe design system (X type size 031 and 051)
- Suitable for any commercial buildings and even for hotels and residential applications
- X, K and FT also available with infrared remote controller
- Quiet operation ensures maximum comfort
- 3-way valve kit features precise temperature control in the room
- Cleanable air filter included as standard

## FW-X Type Ceiling Cassette FW-X03 • FW-X05 • FW-X06 • FW-X08 • FW-X10 - 2 pipe

			FW-X031EH5	FW-X051EH5	FWX061EH5	FW-X081EH5	FW-X0101EH5	
			FW-X032EH5	FW-X052EH5	FWX062EH5	FW-X082EH5	FW-X0102EH5	
Main power supply		V/Ph/Hz	230/1+N/50					
Total cooling capacity	Max/med/min*	kW	2.60/2.35/2.15	4.70/4.10/3.60	6.00/5.00/4.20	7.60/6.00/5.00	9.92/8.09/6.23	
Sensible cooling capacity	Max/med/min*	kW	2.31/2.09/1.91	3.72/3.21/2.80	4.70/3.80/3.20	6.00/4.70/3.80	7.60/6.22/4.62	
Heating capacity	Max/med/min*	kW	3.49/3.11/2.83	5.70/4.85/4.35	7.70/6.40/5.40	9.00/7.70/6.40	13.00/10.60/8.16	
Air flow	Max/med/min*	m³/h	520/400/600	750/630/530	1300/1060/850	1470/1300/1060	2300/1700/1200	
Absorbed power	Max/med/min*	W	60/50/40	90/70/50	120/90/80	150/120/90	180/130/110	
Water flow	Max/med/min*	l/h	430/395/360	790/690/600	1030/860/720	1300/1030/860	1700/1400/1070	
Sound power level (Lw)	Max/med/min*	dB(A)	46/44/41	56/51/48	51/44/40	55/51/44	57/49/43	
Sound pressure level (Lp)	Max/med/min*	dB(A)	37/35/32	47/42/39	42/35/31	46/42/35	48/40/34	
Water connections		inch	1/2" female			3/4" female		
Dimensions & Weights								
Dimensions (H/W/D)	body	mm	296x575x575	296x575x575	310x760x760	310x760x1050	310x760x1050	
	grille panel	mm	41x730x730	41x730x730	30x860x860	30x860x1150	30x860x1150	
Weight (with grille panel)		kg	21	23	28	32	36	



**FW-X  
Ceiling Cassette**

models  
X031, X051  
X061  
X081, X101  
X032, X052  
X062  
X082, X102

Also available: FW-031EH5-4 and FW-051EH5 - 4 pipe

## FW-K Type Wall Mounted Units FW-K01 • FW-K02 • FW-K03 • FW-K04 - 2 pipe

Performance			FW-K011EH5	FW-K021EH5	FW-K031EH5	FW-K041EH5
			FW-K012EH5	FW-K022EH5	FW-K032EH5	FW-K042EH5
Main power supply		V/Ph/Hz	230/1+N/50			
Total cooling capacity	Max/min*	kW	1.24/0.80	1.67/0.96	2.90/1.57	3.50/2.35
Sensible cooling capacity	Max/min*	kW	0.94/0.58	1.30/0.74	2.20/1.20	2.70/1.80
Heating capacity	Max/min*	kW	1.72/1.11	2.38/1.49	3.90/2.45	5.40/3.60
Air flow	Max/min*	m³/h	220/150	270/180	585/360	720/470
Absorbed power	Max/min*	W	24/19	20/16	75/57	86/57
Water flow	Max/min*	l/h	215/135	290/165	500/274	615/415
Sound power level (Lw)	Max/min*	dB(A)	44/37	45/35	50/46	55/48
Sound pressure level (Lp)	Max/min*	dB(A)	35/28	36/26	41/37	46/39
Water connections		inch	1/2" female			
Dimensions & Weights						
Dimensions (H/W/D)		mm	270x805x177	270x805x177	285x995x206	285x995x206
Weight		kg	8	8	12	12



**FW-K  
Wall Mounted Unit**

## FW-FT Type Floor/Ceiling Units FW-FT02 • FW-FT03 • FW-FT04 - 2 pipe

Performance			FW-FT021EH5	FW-FT031EH5	FW-FT041EH5
			FW-FT022EH5	FW-FT032EH5	FW-FT042EH5
Main power supply		V/Ph/Hz	230/1+N/50		
Total cooling capacity	Max/Med/Min*	kW	2.10/1.20/0.90	3.19/2.10/0.90	3.90/3.10/1.65
Sensible cooling capacity	Max/Med/Min*	kW	1.50/1.00/0.70	2.47/1.50/0.70	3.00/2.50/1.25
Heating capacity	Max/Med/Min*	kW	3.10/2.00/1.60	4.07/3.00/1.60	5.00/4.40/2.10
Air flow	Max/Med/Min*	m³/h	430/300/210	520/430/210	675/570/327
Absorbed power	Max/Med/Min*	W	40/30/26	46/37/26	70/53/35
Water flow	Max/Med/Min*	l/h	360/206/160	550/360/160	670/530/285
Sound power level (Lw)	Max/Med/Min*	dB(A)	48/43/35	50/45/35	54/51/40
Sound pressure level (Lp)	Max/Med/Min*	dB(A)	40/35/27	42/37/27	46/43/32
Water connections		(inches)	1/2" female		
Dimensions & Weights					
Dimensions (H/W/D)		mm	680x900x190		
Weight		kg	23.5		



**FW-FT  
Floor/Ceiling Unit**

(\*) Fan speed

### Nominal conditions

	Cooling	Heating	Sound pressure level
Entering air temperature	27°C (db) 19°C (wb)	20°C	At 2m distance in closed environment
Entering water temperature	7°C	50°C (at same water flow as for cooling)	100m³ volume with 0.5 sec reverberation time
Leaving water temperature	12°C	60°C (maximum water entering temperature)	

# Controls & Accessories

## Electronic controller with infrared wireless remote control

- Suitable for control of 2-pipe water terminals only
- Functions (manual selection)
  - Cooling
  - Dehumidification
  - Heating
  - Automatic
  - Fan only
- Operating range: from 10°C to 32°C room temperature
- Fan speed selection: manual (High/Med/Low) or automatic
- Automatic flap
- Room temperature sensor on remote control or unit
- Address switches on remote control (up to 4 different addresses)
- Minimum water temperature sensor
- Control of room temperature:
  - Fan ON-OFF
  - Automatic valve ON-OFF (if used)
- 24 hours timer
- Night set-back/energy saving (SLEEP)



NOTE - The control does not allow centralised Heat-Cool changeover, nor automatic changeover by external temperature sensor.

## Wired wall mounted controls



**RAB 30 - 70250076**  
For 2&4-pipe systems with manual Heat-cool changeover

- Two-positions ON-OFF control
- Fan speed selector - 3 speeds
- Control output 230V AC
- 2-pipe control on fan
- 2-pipe control on valve:
  - permanent ventilation
  - fan and valves operated at the same time
- 4-pipe control on two valves:
  - permanent ventilation
  - fan and valves operated at the same time
- Operating range: 8-30°C
- Switching differential 1K



**RCC 10 - 70250051**  
For 2-pipe systems with remote Heat-Cool changeover

- Two-positions ON-OFF control
- Fan speed selector - 3 speeds
- Control output 230V AC
- 2-pipe control on fan
- 2-pipe control on valve:
  - permanent ventilation
  - fan and valves operated at the same time
- Room temperature control from thermostat or external sensor (separately ordered)
- Heat-cool changeover:
  - automatic changeover by temperature sensor (to be ordered separately)
  - manual changeover by remote contact (not supplied)
- Operating modes:
  - comfort
  - economy
  - frost protection
- Operating range: 8-30°C
- Switching differential: adjustable
- Operating LED lights



**RCC 20 - 70250052**  
For 4-pipe systems with Heat-Cool automatic changeover

- Two-positions ON-OFF control
- Fan speed selector - 3 speeds
- Control output 230V AC
- 4-pipe control on two valves:
  - permanent ventilation
  - fan and valves operated at the same time
- Room temperature control from thermostat or external sensor (separately ordered)
- Automatic heat-cool changeover, with dead zone adjustable at 2K or 5K
- Operating modes:
  - comfort
  - economy
  - frost protection
- Operating range: 8-30°C
- Switching differential: adjustable
- Operating LED lights

## Control accessories

MODEL	CH 15-25	ASB	ASE	SEL-0
CODE N°	9053049	70250053	70250054	9060137
Description	Automatic changeover sensor for 2-pipe system	Air temperature sensor (bare)	Air temperature sensor (with box)	Speed selector receiver
Use with	RCC 10	RCC 10 & RCC 20	RCC 10 & RCC 20	RAB 30, RCC 10 & RCC 20

## Accessories

MODEL	KVX1	KVX2	KVX3
CODE N°	70600088	70600089	70600071
Description	Kit 3-way valve 1/2" male - Kvs 1.6	Kit 3-way valve 3/4" male - Kvs 2.5	Kit 3-way valve 1/2" male - Kvs 1.6
Use with	FW-X: models 03 & 05 2 & 4 pipe	FW-X: models 06, 08, 10	FW-FT & FW-Kv

Specifications subject to change without notice

# Fan-Coil Units



**S-VM**  
Floor Standing Unit



**S-HM**  
Ceiling Unit



**S-VH**  
Concealed Unit

- Very wide and complete range: centrifugal or Cross Flow Fan, 2-pipe or 4-pipe design
- Stylish units can match any kind of interior decor
- Cleanable air filter included
- Easy to install and very simple to maintain
- Electronic controllers available for unit mounting and remote installation ensure precise control of the room temperature
- Large choice of accessories, either separately supplied or factory mounted

## Cross Flow fan S-VMT/HMT/VHT 151-251-351

Performance			151	251	351	
Main power supply		V/Ph/Hz	230/1+N/50			
Total cooling capacity	Max/med/min*	kW	1.40/1.20/1.04	2.40/2.08/1.70	3.40/2.80/2.30	
Sensible cooling capacity	Max/med/min*	kW	1.17/0.92/0.78	2.02/1.62/1.31	2.87/2.30/1.89	
Heating capacity (standard coil)	Max/med/min*	kW	2.08/1.66/1.46	3.10/2.70/2.30	4.30/3.60/2.90	
Heating capacity (add. 1 row coil)	Max/med/min*	kW	1.65/1.35/1.20	2.60/2.25/1.95	3.50/3.00/2.45	
Air flow	Max/med/min*	m³/h	300/240/190	450/360/290	600/480/380	
Absorbed power	Max/med/min*	W	40/30/27	50/45/37	65/50/42	
Water flow cooling	Max/med/min*	litres/h	240/210/180	240/210/180	585/485/400	
Water pressure drop heating	Max/med/min*	kPa	4.0/3.2/2.4	14.7/11.8/8.5	13.2/10.0/7.0	
Water flow heating	Max/med/min*	litres/h	145/120/105	225/195/170	300/260/210	
Water pressure drop heating	Max/med/min*	kPa	2.5/1.9/1.5	8.9/6.9/5.4	2.9/2.3/1.7	
Sound power level	(Lw) Max/med/min*	dB(A)	48/40/34	47/42/36	48/43/39	
Sound pressure level	(Lp) Max/med/min*	dB(A)	39/31/25	38/33/27	39/34/30	
Dimensions & Weights						
Dimensions	(H/W/D)	S-VMT	mm	530x775x225	530x990x225	530x1205x225
Dimensions	(H/W/D)	S-HMT	mm	225x775x530	225x990x530	225x1205x530
Dimensions	(H/W/D)	S-VHT	mm	530x567x218	530x782x218	530x1007x218
Weight		S-VMT	kg	18	26	29
Weight		S-HMT	kg	18	26	29
Weight		S-VHT	kg	17	25	28

(\*) Fan speed

## Centrifugal fan S-VMC/HMC/VHC 151-251-351-401-501-601-701

Performance			151	251	351	401	501	601	701	
Main power supply		V/Ph/Hz	230/1+N/50							
Total cooling capacity	Max/med/min*	kW	1.50/1.30/1.10	2.50/2.15/1.80	3.50/2.90/2.47	4.00/3.44/2.90	4.80/4.15/3.60	5.95/5.08/4.30	6.60/5.50/4.60	
Sensible cooling capacity	Max/med/min*	kW	1.25/1.00/0.83	2.10/1.68/1.39	2.95/2.35/1.95	3.35/2.68/2.21	4.05/3.24/2.67	5.00/4.00/3.30	5.50/4.40/3.64	
Heating capacity (standard coil)	Max/med/min*	kW	2.06/1.70/1.40	3.30/2.70/2.30	4.45/3.70/3.00	5.20/4.35/3.65	6.60/5.50/4.70	8.00/6.70/5.50	8.80/7.30/6.00	
Heating capacity (add. 1 row coil)	Max/med/min*	kW	1.75/1.35/1.25	2.70/2.35/2.05	3.60/3.10/2.65	3.69/3.31/2.65	5.30/4.50/3.90	5.50/5.00/4.20	5.50/5.00/4.20	
Air flow	Max/med/min*	m³/h	300/240/190	450/360/290	600/480/380	750/600/480	1000/800/650	1200/950/750	1200/950/750	
Absorbed power	Max/med/min*	W	50/37/25	60/50/45	87/80/60	95/80/65	130/85/65	180/145/120	180/145/120	
Water flow cooling	Max/med/min*	litres/h	260/225/190	430/370/310	600/500/425	690/590/500	825/715/620	1020/875/740	1135/950/795	
Water pressure drop heating	Max/med/min*	kPa	5.7/4.3/3.2	14.1/10.6/7.9	12.3/9.2/7.0	17.9/13.5/10.0	27.8/20.5/16.8	21.1/16.0/12.0	4.5/3.3/2.4	
Water flow heating	Max/med/min*	litres/h	150/120/110	235/205/180	310/270/230	315/285/250	460/390/340	475/435/365	475/435/365	
Water pressure drop heating	Max/med/min*	kPa	3.7/2.8/2.2	8.6/6.7/5.3	2.8/2.3/1.7	3.7/2.9/2.3	7.3/5.7/4.3	6.9/5.8/4.3	6.9/5.8/4.3	
Sound power level	(Lw) Max/med/min*	dB(A)	51/45/40	54/50/42	51/42/37	54/48/45	59/54/48	60/55/48	60/55/48	
Sound pressure level	(Lp) Max/med/min*	dB(A)	42/36/31	45/41/33	42/33/28	45/39/36	50/45/39	51/46/39	51/46/39	
Dimensions & Weights										
Dimensions	(H/W/D)	S-VMC	mm	530x775x225	530x990x225	530x1205x225	530x1205x225	530x1420x225	530x1420x255	530x1420x255
Dimensions	(H/W/D)	S-HMC	mm	225x775x530	225x990x530	225x1205x530	225x1205x530	225x1420x530	255x1420x530	255x1420x530
Dimensions	(H/W/D)	S-VHC	mm	530x510x218	530x725x218	530x940x218	530x940x218	530x1155x218	530x1155x248	530x1155x248
Weight			kg	17	24	27	28	33	43	48
Weight			kg	17	24	27	28	33	43	48
Weight		S-VHC	kg	16	23	26	27	31	40	45

(\*) Fan speed

Nominal conditions				
	Cooling	Heating additional 1-row coil	Heating standard coil	Sound pressure level
Entering air temperature	27°C(db) 19°C(wb)	20°C	20°C	At 2m distance in closed environment
Entering water temperature	7°C	70°C	50°C (at same water flow as for ceiling)	100m³ volume with 0.5 sec reverberation time
Leaving water temperature	12°C	60°C		

# Controls & Accessories

## Fan Coil Unit Controls

### Unit Mounted Controls

MODEL	MV-3V	TMV-M	TMV-T	TMV-C	TMV-AU	TMV-AU-C
CODE N°	9060130	9060131	9060132	9060133	9060134	9060135
Function						
On/Off	yes	yes	yes	yes	yes	yes
Fan speed	3-manual	3-manual	3-manual	3-manual	3-auto	3-auto
Thermostat	—	fan only	fan or valve/es	fan or valve/es	fan or valve/es	fan or valve/es
S/W Changeover	—	yes	yes	no-remote	yes	no-remote

### Wall Mounted Controls

MODEL	MO-3V	RAB30	RCC10	RCC20
CODE N°	9060516	70250076	70250051	70250052
Function				
On/Off	yes	yes	yes	yes
Fan speed	3-manual	3-manual	3-manual	3-manual
Thermostat	—	fan and/or valve/es	fan and/or 1 valve	fan and/or 2 valves
S/W Changeover	—	yes	auto or remote	auto or remote

### Control Accessories

CODE N°	MODEL	Description	Use with
3021091	TME	Minimum water temperature sensor	TMV-T TMV-C TMV-AU TMV-AU-C
9053049	CH 15-25	Automatic change over sensor for 2 pipe system	TMV-C TMV-AU-C RCC 10
70250053	ASB	Air temperature sensor (bare)	RCC10 RCC20
70250054	ASE	Air temperature sensor (with box)	RCC 10 RCC 20
9060136	SELV	Speed selector receiver for VMC and VMT units	RAB 30 RCC 10 RCC 20
9060137	SEL-0	Speed selector receiver for HMC, HMT, VHC, VHT units	RAB 30 RCC 10 RCC 20
9060103	AMU	Terminal block adaptor for remote control	—

Specifications subject to change without notice

## Accessories

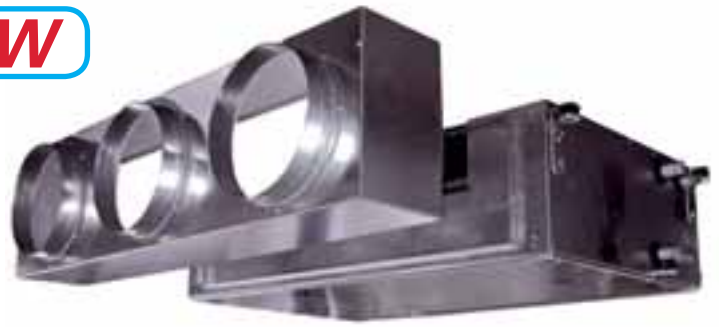
### Control Accessories

CODE N°	MODEL	Description	Use with
9060150	PAP 1-5	Feet (pair) for unit size from 151 to 501	VMC/VMT/VHC/VHT
9060151	PAP 6-7	Feet (pair) for unit size from 601 e 701	VMC/VMT/VHC/VHT
6060400	BSV	Auxiliary drain pan for vertical units	VMC/VMT/VHC/VHT/HMC/HMT
6060402	BS0-SX	Auxiliary drain pan for horizontal units left side	HMC/HMT/VHC/VHT
6060403	BS0-DX	Auxiliary drain pan for horizontal units right side	HMC/HMT/VHC/VHT
6060420	SCR	Condensate drain with quick coupling	HMC/HMT/VHC/VHT
9060270	VBPS 1-3	Kit 3-way valve for unit size 151-251-351 - 1/2" F Kvs 1.6	all models
9060271	VBPS 4-7	Kit 3-way valve for unit size 401-501-601-701 - 1/2" F Kvs 2.5	all models
9060274	VBAS 1-7	Kit 3-way valve for 1-row coil - 1/2" F Kvs 1.6	all 4-pipes models
9060272	VBPM 1-3	Kit 3-way valve for unit size 151-251-351 factory mounted	all models
9060273	VBPM 4-7	Kit 3-way valve for unit size 401-501-601-701 factory mtd	all models
9060275	VBAM 1-7	Kit 3-way valve for 1-row coil factory mounted	all 4-pipes models
9070140	PCVL 1	Back panel for unit size 151	VMC/VMT/HMC/HMT
9070141	PCVL 2	Back panel for unit size 251	VMC/VMT/HMC/HMT
9070142	PCVL 3-4	Back panel for unit size 351 and 451	VMC/VMT/HMC/HMT
9070143	PCVL 5-6-7	Back panel for unit size 501-601-701	VMC/VMT/HMC/HMT
9060190	PCO 1	Back panel for unit size 151	HMC/HMT
9060191	PCO 2	Back panel for unit size 251	HMC/HMT
9060192	PCO 3-4	Back panel for unit size 351 and 451	HMC/HMT
9060193	PCO 5	Back panel for unit size 501	HMC/HMT
9060194	PCO 6-7	Back panel for unit size 601 e 701	HMC/HMT
9060220	KAF 1	Kit front air return for unit size 151 factory mounted	VHC/VHT
9060221	KAF 2	Kit front air return for unit size 251 factory mounted	VHC/VHT
9060222	KAF 3-4	Kit front air return for unit size 351-451 factory mounted	VHC/VHT
9060223	KAF 5	Kit front air return for unit size 501 factory mounted	VHC/VHT
9060224	KAF 6-7	Kit front air return for unit size 601-701 factory mounted	VHC/VHT

Specifications subject to change without notice

# Ducted Units

**NEW**



Model Number (2 pipe)		S-HDC 601-2	S-HDC 801-2	S-HDC 1001-2	S-HDC 1301-2	S-HDC 1601-2
<b>Performances</b>						
Main power supply	V/F/Hz	230/1+N/50				
Total cooling capacity	Max/med/min kW	5.59/5.06/4.54	7.65/7.26/6.79	10.50/9.53/8.81	12.89/11.67/10.08	16.53/15.39/13.49
Sensible cooling capacity	Max/med/minn kW	4.58/4.07/3.59	6.07/5.71/5.28	8.36/7.46/6.82	10.13/9.03/7.65	13.21/12.15/10.45
Heating capacity	Max/med/min kW	8.13/7.25/6.41	10.7/10.11/9.34	14.8/13.2/12.0	17.91/15.9/13.4	23.4/21.54/18.5
Air flow	Max/med/minn m³/h	1180/1005/850	1515/1390/1255	2130/1825/1615	2500/2140/1720	3365/3000/2450
External static pressure	Max/med/min Pa	60/50/35	60/50/35	60/50/35	60/50/35	60/50/35
Absorbed power	Max/med/minn W	205/160/125	290/260/240	460/390/340	580/500/440	960/820/680
Water pressure drop	Cooling Max/med/min kPa	6.2/5.2/4.3	12.2/11.2/9.9	18.3/15.4/13.3	15.3/12.7/9.8	13.8/12.0/9.5
Water pressure drop	Heating Max/med/min kPa	5.3/4.4/3.6	10.3/9.4/8.3	15.5/13.0/11.3	12.9/10.7/8.3	11.7/10.2/8.0
Sound power level - outlet	(Lw) Max/med/min dB(A)	62/57/53	66/63/61	65/63/59	67/64/60	72/69/63
Sound power level - inlet+radiated	(Lw) Max/med/min dB(A)	63/59/55	69/66/63	68/65/62	69/67/64	75/72/67
Sound pressure level - outlet	(Lp) Max/med/min dB(A)	53/48/44	57/54/52	56/54/50	58/55/51	63/60/54
Sound pressure level - inlet+radiated	(Lp) Max/med/min dB(A)	54/50/46	60/57/54	59/56/53	60/58/55	66/63/58
Rows	No	4	4	4	4	4
Coil water content	Lt	2.6	3.7	4.6	6.0	7.1
Water connections	inch	3/4" male	1" male	1" male	1 1/4" male	1 1/4" male
Dimensions	(HxLxD) mm	310x1133x748	310x1133x748	360x1133x748	360x1445x903	435x1445x903
Net weight	kg	47	48	56	78	88

Model Number (4 pipe)		S-HDC 601-4	S-HDC 801-4	S-HDC 1001-4	S-HDC 1301-4	S-HDC 1601-4
<b>Performances</b>						
Main power supply	V/F/Hz	230/1+N/50				
Total cooling capacity	Max/med/min kW	5.42/4.89/4.39	7.41/7.02/6.56	10.18/9.22/8.52	12.48/11.28/9.72	16.01/14.89/13.04
Sensible cooling capacity	Max/med/min kW	4.41/3.91/3.45	5.84/5.49/5.08	8.05/7.19/6.56	9.75/8.69/7.36	12.72/11.70/10.05
Heating capacity	Max/med/min kW	4.75/4.40/3.97	6.21/5.92/5.57	8.10/7.54/7.02	10.36/9.46/8.25	13.36/12.72/11.25
Air flow	Max/med/minn m³/h	1120/955/810	1435/1325/1190	2023/1735/1535	2375/2035/1635	3200/2850/2330
External static pressure	Max/med/min Pa	60/50/35	60/50/35	60/50/35	60/50/35	60/50/35
Absorbed power	Max/med/min W	205/160/125	290/260/240	460/390/340	580/500/440	960/820/680
Water pressure drop	Cooling Max/med/min kPa	5.8/4.8/4.0	11.6/10.5/9.3	17.4/14.6/12.6	14.5/12.1/9.2	13.0/11.4/9.0
Water pressure drop	Heating Max/med/min kPa	11.9/10.3/8.6	21.0/19.3/17.3	14.9/13.1/11.6	25.9/22.1/17.2	24.4/22.4/17.9
Sound power level - outlet	(Lw) Max/med/min dB(A)	62/57/53	66/63/61	65/63/59	67/64/60	72/69/63
Sound power level - inlet+radiated	(Lw) Max/med/min dB(A)	63/59/55	69/66/63	68/65/62	69/67/64	75/72/67
Sound pressure level - outlet	(Lp) Max/med/min dB(A)	53/48/44	57/54/52	56/54/50	58/55/51	63/60/54
Sound pressure level - inlet+radiated	(Lp) Max/med/min dB(A)	54/50/46	60/57/54	59/56/53	60/58/55	66/63/58
Rows - cooling+heating coils	No	4+1	4+1	4+1	4+1	4+1
Coil water content - cooling coil	Lt	2.6	3.7	4.6	6.0	7.1
Coil water content - heating coil	Lt	0.9	1.1	1.4	2.0	2.7
Water connection - cooling coil	inch	3/4" male	1" male	1" male	1 1/4" male	1 1/4" male
Water connection - heating coil	inch	3/4" male	3/4" male	3/4" male	1" male	1" male
Dimensions	(HxLxD) mm	310x1133x748	310x1133x748	360x1133x748	360x1445x903	435x1445x903
Net weight	kg	50	51	60	83	94

Nominal conditions				
	Cooling	Heating additional 1-row coil	Heating standard coil	Sound pressure level
Entering air temperature	27°C(db) 19°C (wb)	20°C	20°C	At 2m distance in closed environment
Entering water temperature	7°C	70°C	50°C (at same water flow as for ceiling)	100m³ volume with 0.5 sec reverberation time
Leaving water temperature	12°C	60°C		

Model Number (2 pipe)		S-HSC 151-2	S-HSC 201-2	S-HSC 301-2	S-HSC 351-2	S-HSC 501-2	S-HSC 601-2	S-HSC 701-2	S-HSC 801-2	
Performances										
Main power supply	V/F/Hz	230/1+N/50								
Total cooling capacity	Max/med/min kW	1.71/1.59/1.46	1.98/1.83/1.67	3.14/2.87/2.68	3.48/3.16/2.95	5.10/4.65/4.27	5.84/5.28/4.81	6.95/6.51/5.81	7.81/7.28/6.45	
Sensible cooling capacity	Max/med/min kW	1.32/1.22/1.11	1.47/1.35/1.23	2.36/2.15/2.00	2.57/2.32/2.15	3.94/3.56/3.24	4.38/3.93/3.55	5.26/4.90/4.34	5.78/5.36/4.72	
Heating capacity	Max/med/min kW	2.21/2.05/1.87	2.46/2.25/2.04	3.84/3.49/3.24	4.25/3.84/3.55	6.39/5.78/5.30	7.17/6.43/5.84	8.52/8.00/7.07	9.43/8.79/7.72	
Air flow	Max/med/min m³/h	315/290/260	315/290/260	540/480/440	540/480/440	930/820/730	930/820/730	1200/1100/950	1200/1100/950	
External static pressure	Max/med/min Pa	65/50/40	65/50/40	65/50/40	65/50/40	65/50/40	65/50/40	65/50/40	65/50/40	
Absorbed power	Max/med/min W	63/55/50	63/55/50	110/99/92	110/99/92	190/160/140	190/160/140	210/195/175	210/195/175	
Water pressure drop	Cooling	Max/med/min kPa	10.0/8.8/7.4	16.0/13.8/11.6	16.2/13.8/12.0	12.0/10.2/9.0	19.8/16.8/14.4	12.0/10.2/8.4	16.8/14.4/12.0	12.0/10.8/8.4
Water pressure drop	Heating	Max/med/min kPa	8.6/7.4/6.2	13.7/11.7/9.8	13.7/11.4/10.0	10.4/9.1/7.8	17.6/15.0/13.0	10.4/9.1/7.2	15.0/13.0/10.4	11.1/9.8/7.8
Sound power level - outlet (Lw)	Max/med/min dB(A)	51/49/46	51/49/46	51/49/47	51/49/47	57/55/51	57/55/51	58/56/52	58/56/52	
Sound power level - inlet+radiated (Lw)	Max/med/min dB(A)	59/56/52	59/56/52	58/55/53	58/55/53	63/60/57	63/60/57	64/61/58	64/61/58	
Sound pressure level - outlet (Lp)	Max/med/min dB(A)	42/40/37	42/40/37	42/40/38	42/40/38	48/46/42	48/46/42	49/47/43	49/47/43	
Sound pressure level - inlet+radiated (Lp)	Max/med/min dB(A)	50/47/43	50/47/43	49/46/44	49/46/44	54/51/48	54/51/48	55/52/49	55/52/49	
Rows	No	3	4	3	4	3	4	3	4	
Coil water content	Lt	1.0	1.3	1.7	2.3	2.0	2.9	3.2	4.2	
Water connections	inch	1/2" female								
Dimensions (HxLxD)	mm	218x669x530	218x669x530	248x884x530	248x884x530	248x1099x530	248x1099x530	248x1550x530	248x1550x530	
Net weight	kg	16	17	24	26	29	32	45	48	

Model Number (4 pipe)		S-HSC 151-4	S-HSC 301-4	S-HSC 501-4	S-HSC 701-4
Performances					
Main power supply	V/F/Hz	230/1+N/50			
Total cooling capacity	Max/med/min kW	1.71/1.59/1.46	3.14/2.87/2.68	5.10/4.65/4.27	6.95/6.51/5.81
Sensible cooling capacity	Max/med/min kW	1.32/1.22/1.11	2.36/2.15/2.00	3.94/3.56/3.24	5.26/4.90/4.34
Heating capacity	Max/med/min kW	2.00/1.87/1.73	3.24/2.98/2.81	5.16/4.75/4.38	7.09/6.68/6.02
Air flow	Max/med/min m³/h	315/290/260	540/480/440	930/820/730	1200/1100/950
External static pressure	Max/med/min Pa	65/50/40	65/50/40	65/50/40	65/50/40
Absorbed power	Max/med/min W	63/55/50	110/99/92	190/160/140	210/195/175
Water pressure drop	Cooling	Max/med/min kPa	10.0/8.8/7.4	16.2/13.8/12.0	19.8/16.8/14.4
Water pressure drop	Heating	Max/med/min kPa	8.0/7.0/6.0	3.9/3.3/2.8	9.0/8.0/7.0
Sound power level - outlet (Lw)	Max/med/min dB(A)	51/49/46	51/49/47	57/55/51	58/56/52
Sound power level - inlet+radiated (Lw)	Max/med/min dB(A)	59/56/52	58/55/53	63/60/57	64/61/58
Sound pressure level - outlet (Lp)	Max/med/min dB(A)	42/40/37	42/40/38	48/46/42	49/47/43
Sound pressure level - inlet+radiated (Lp)	Max/med/min dB(A)	50/47/43	49/46/44	54/51/48	55/52/49
Rows - cooling+heating coils	No	3+1	3+1	3+1	3+1
Coil water content - cooling coil	Lt	1.0	1.7	2.0	3.2
Coil water content - heating coil	Lt	0.4	0.5	0.6	0.9
Water connection - cooling coil	inch	1/2" female	1/2" female	1/2" female	1/2" female
Water connection - heating coil	inch	1/2" female	1/2" female	1/2" female	1/2" female
Dimensions (HxLxD)	mm	218x669x530	248x884x530	248x1099x530	248x1550x530
Net weight	kg	17.4	25.7	31.0	47.7

Nominal conditions				
	Cooling	Heating additional 1-row coil	Heating standard coil	Sound pressure level
Entering air temperature	27°C(db) 19°C(wb)	20°C	20°C	At 2m distance in closed environment
Entering water temperature	7°C	70°C	50°C (at same water flow as for ceiling)	100m³ volume with 0.5 sec reverberation time
Leaving water temperature	12°C	60°C		